

# humpter<sup>®</sup>

ENGINEERED TO **PERFECTION**

PRODUCTS

## ABOUT US

We live the **music**. Our hearts beat at the speed of 128 BPM. Every day we create products for **professionals**, always choosing the most **ambitious** path and accepting only the **highest quality** solutions. We combine elegant minimalism with high functionality. We work with the music community all over the world, and our solutions bring **real benefits** to the user. They significantly improve the image and comfort of work, and - which is equally important - effectively **protect** high-value audio equipment. What unites our team is passion and consistent path to **perfection**.



### **Distinguish yourself.**

A professional image will help you reach the most demanding customers.

### **Think about comfort.**

Low weight and assembly without tools will make the preparation of the workplace much easier.

### **Trust the quality.**

Thanks to selected components, machine precision and manual finishing, our product will be your favorite tool.

### **Unleash your imagination.**

Add customised graphics or a unique color combination.

### **Be versatile.**

Combine individual modules whenever you need them. Adjust the size of the workstation to each location and situation.

### **Remove restrictions.**

Convenient accessories will allow you to use any audio equipment, regardless of its size.



## CONSOLE PRO MK2

Our flagship product, refined to perfection. High functionality, high mobility, elegant design and the highest quality of workmanship. We have dedicated years of work to ensure that it meets the highest standards. Console PRO can be freely extended with the PRO60 side modules, which makes the stand perfectly adapted to your needs, regardless of the place and situation. Thanks to dedicated accessories you will be able to use any audio equipment comfortably.

## AVAILABLE COLOURS<sup>1</sup>



MIDNIGHT  
BLACK

ARCTIC  
WHITE

SILVER  
GREY

<sup>1</sup>The table-top and front panel are in the "Midnight Black" colour by default, but they can also be customised.

<sup>2</sup>Customisation allows placing graphics on the front panel and choosing any colour of the product from the RAL palette.

<sup>3</sup>A set filled with foam and specially reinforced Padded Bags.

## ACCESSORIES

1. **PRO SIDE SHELVES**  
Shelves for monitors or moving heads
2. **PRO LAPTOP STAND**  
Two-axis stand for laptop
3. **PRO SHELF PAD-01**  
Shelf for small controller
4. **PRO SHELF PAD-02**  
Shelf for monitor
5. **PRO LAPTOP STAND 2**  
Adjustable stand for laptop
6. **CUP HOLDER**  
Adjustable stand for laptop
7. **HEADPHONES HOLDER**  
Retractable holder for headphones
8. **PRO TV MOUNT KIT**  
VESA TV mount
9. **PRO FRONT LOWER PANEL**  
Bottom cover

## SPECS

Aluminium / Steel (Table-top)

Size: 148 x 127 x 96 cm

Weight: 30 kg

Assembly time: 4 minutes

## INCLUDED

Humpter® Console PRO MK2

Cup holder

Headphones holder

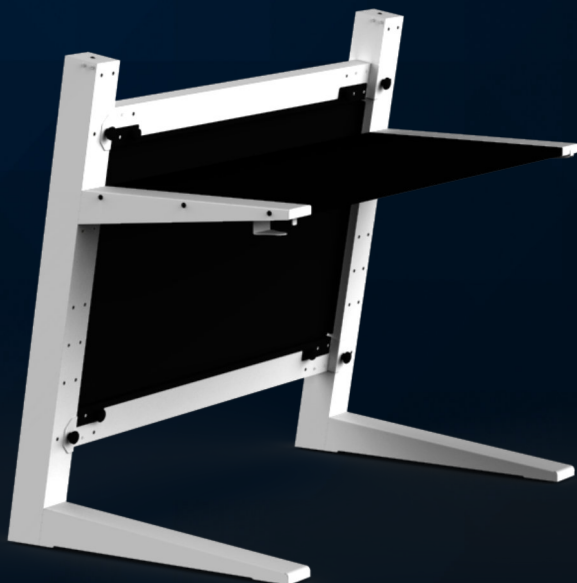
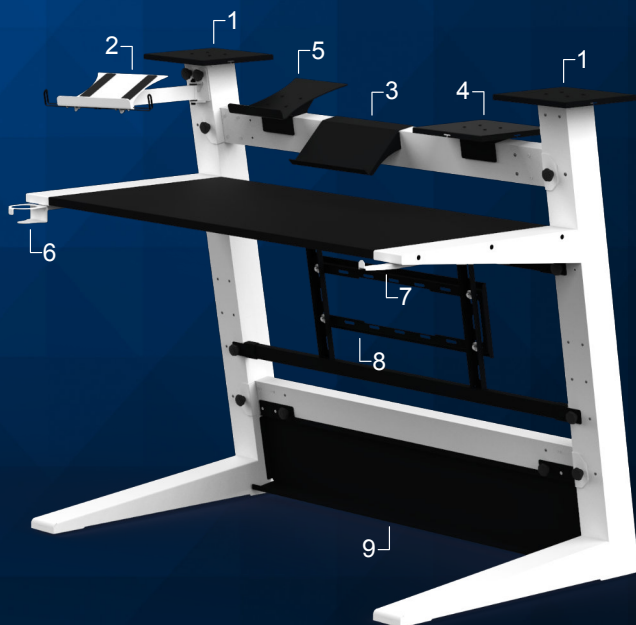
## OPTIONAL

Customisation<sup>2</sup>

Padded Bags<sup>3</sup>



ENGINEERED TO PERFECTION



We know very well that a **contemporary DJ**, musician or performer needs a lot of Console PRO. PRO60 modules will **expand your workstation** by two additional instruments. PRO60 is compatible with Console PRO accessories, making it easy. PRO60 gives you **almost unlimited possibilities** to customise your workstation.

## SPECS (1 Module)

Aluminium / Steel (Table-top)

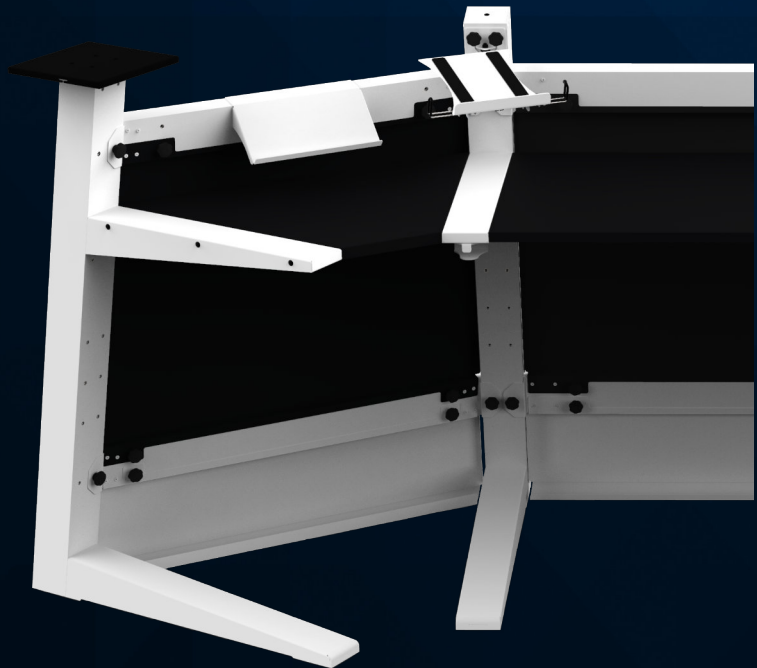
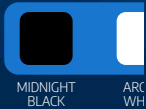
Weight: 10 kg

Assembly time: 4 min

## Included

PRO60 (Two modules)

## Available



of space for his tools. PRO60 Expansion Pack is a set of side modules dedicated to  
 l workspaces, so you will have **even more space** for your controllers, players or  
 sy to mount monitors, moving heads or even a second laptop on your console.

colours<sup>1</sup>



## Optional Customisation<sup>2</sup> Padded Bags<sup>3</sup>

<sup>1</sup>The table-top and front panel are in the "Midnight Black" color by default, but they can also be customised.

<sup>2</sup>Customisation allows placing graphics on the front panel and choosing any colour of the product from the RAL palette.

<sup>3</sup>A set filled with foam and specially reinforced Padded Bags.





## BASIC MK2

The BASIC series has many advantages that are important for a mobile DJ. The **compact** size of the product, its low weight and exceptional stability give you a high level of **comfort**. A variety of customization options makes it easy to draw attention of potential customers and sets you apart from the competition. Additional accessories will increase your possibilities and allow you to develop your **creativity**. Thanks to the modular design, workstations can be combined to create a **large workspace**, whenever you need it.

## AVAILABLE COLOURS<sup>1</sup>



MIDNIGHT  
BLACK

ARCTIC  
WHITE

SILVER  
GREY

<sup>1</sup>The table-top and front panel are in the "Midnight Black" colour by default, but they can also be customised.

<sup>2</sup>Customisation allows placing graphics on the front panel and choosing any colour of the product from the RAL palette.

<sup>3</sup>A set filled with foam and specially reinforced Padded Bags.

## ACCESSORIES

1. **BASIC LAPTOP STAND**  
Three-axis laptop stand
2. **BASIC TV MOUNT KIT**  
VESA TV mount
3. **BASIC FRONT PLATE (UPPER)**  
Upper cover (Tall)
4. **BASIC FRONT PLATE (LOWER)**  
Bottom cover
5. **BASIC SIDE SHELVES**  
Shelves for monitors or moving heads
6. **BASIC SIDE PANELS**  
Aluminium side panels
7. **HEADPHONES HOLDER**  
Retractable headphones holder
8. **CUP HOLDER**  
Retractable cup holder

## SPECS

Aluminium / Steel (Table-top)

Size: 120 x 94 x 71 cm

Weight: 25 kg

Assembly time: 3 minutes

## INCLUDED

Humpter® BASIC MK2

Cup holder

Headphones holder

## OPTIONAL

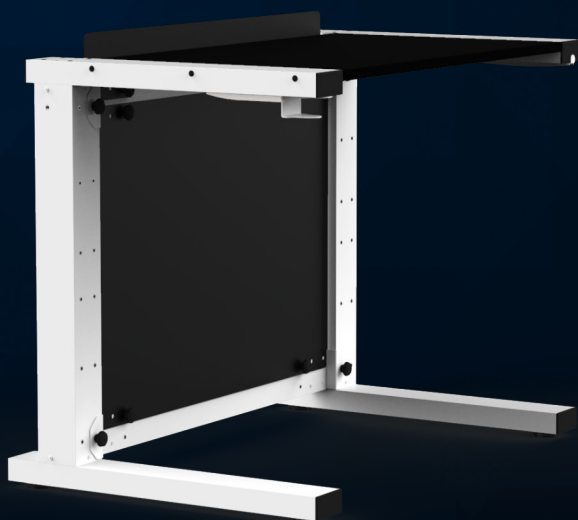
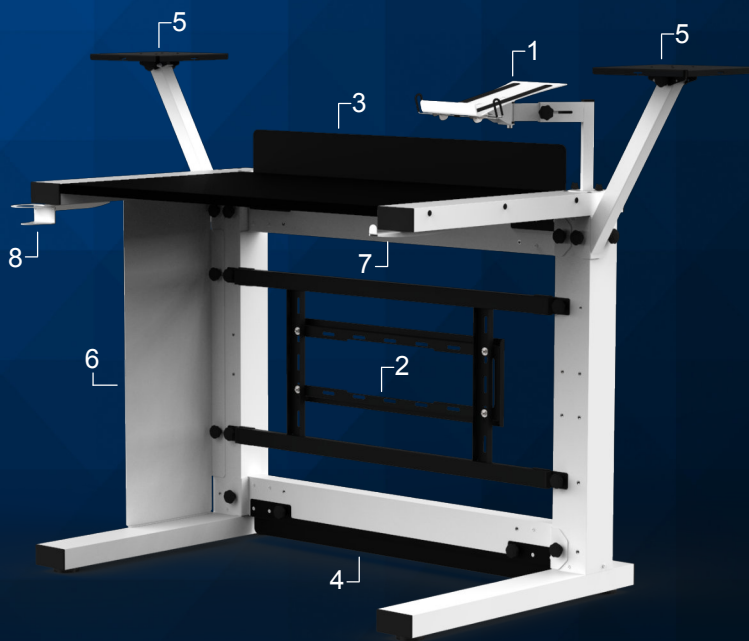
Customisation<sup>2</sup>

Padded Bags<sup>3</sup>





ENGINEERED TO PERFECTION



## MH STAND

We are proud to present **mobile**, easy to install and **durable** stands for speakers or moving heads. A **solid base**, quick and strong butterfly locks, dual speaker mount and FastLock cable management system are just some of the benefits that make an excellent alternative to today's aluminium constructions. **Lightweight and compact** when folded, they will make transportation and storage easier for you. The patented design provides a high degree of stability and sleek look. The possibility of setting different heights (120 and 180 cm) makes them an optimal and versatile solution. MH Stands are **unique** in their class and perfectly complement the PRO and BASIC product series.

### SPECS

Aluminium / Steel

Height: 120 or 180 cm

Weight: 14 kg (one stand)

Assembly time: 1 minute

### AVAILABLE COLOURS



MIDNIGHT  
BLACK

ARCTIC  
WHITE

SILVER  
GREY

### INCLUDED

MH Stand (2 pcs)

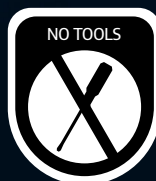
Padded Bags<sup>2</sup>

### OPTIONAL

Customisation<sup>1</sup>

Customisation includes the selection of any colour from the RAL palette<sup>1</sup>

A set of two-layer, filled with foam and specially reinforced Padded Bags<sup>2</sup>



ENGINEERED TO PERFECTION



## PROTECTIVE SOFT BAGS

Padded Protective Soft Bags are designed for **high mobility** and **maximum protection** of Humpter® products. They are **perfectly matched** to parts and accessories, providing a **perfect protection** during transport. Each bag consists of a **double layer** of material, the middle one being filled with a special sponge which further **strengthens the whole structure**. Thanks to our soft bags the transport of tables and accessories is **safe and more comfortable** than ever before.

## SPECS:

- Fabric: Cordura (double layer)
- Special foam between layers of fabric
- Durable zipper
- Pocket for screws
- Pocket for Laptop Stand
- Durable handles
- Rubber feet for stability

## PRO Padded Bags includes:

- Soft bags for sides of console with pockets for screws and Laptop Stand
- Soft bags for cross beams
- Soft bags for table-top and front plate

## A full set of PRO Padded Bags:



A full set of BASIC Padded Bags:





A full set of MH Stand Padded Bags:



[office@humpter.com](mailto:office@humpter.com)

[www.humpter.com](http://www.humpter.com)  
[www.humpter.pl](http://www.humpter.pl)

 @humpter

 @humpter\_dj